

18 m Crew & Supply Vessel



Principal particulars	
Vessel name	SORA 4
Place Built	Lita Ocean, Singapore
Year Build	2023
Type of Hull	Aluminum Alloy
Basic Function	Cargo supply, Pax transfer to OPL
Flag	Qatar
Call sign	A7A3612
IMO	n/a
PAX Capacity	12 Pax + 3 crew
Length Overall	18 m
Breadth	4.8 m
Depth	2.1 m
Draft (max)	0.85 m
Class	Bureau Veritas
GRT	42

Performance	
Maximum Speed	18 Knots
Cruising Speed	16 Knots

Propulsion system	
Main Engines	2 * Yanmar 6CXBM-GT 400 BHP @ 2500 rpm
Auxiliary Engines	2 * Onan 20.5EFKOZD, 20.5kW
Gear box	2 * YX-80
Propellers	2 * SS316L
Steering Gear System	Hydraulic Steering System

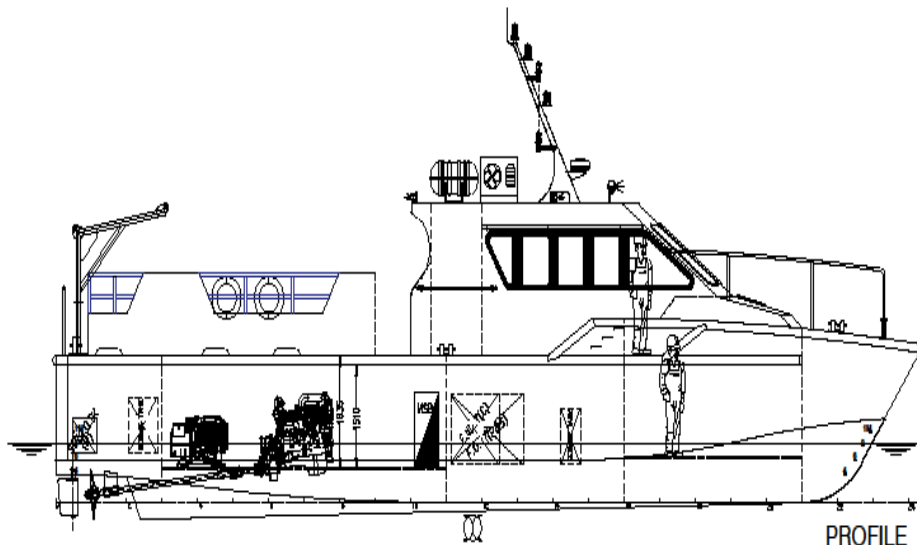
Deck equipment	
Anchors & Chain	As per class req.
Anchor Windlass c/w Bow	Hydraulic Vertical windlass
Davit	300 Kg SWL

Navigation and Communications Equipment	
Navigation Lights & Switches	Masthead & Search Lights
MFD w/GPS and Sounder	GS25 Antenna with Built In Rate Compass
Auto Pilot System	Simrad AP70 MK2
Radar	Simrad HAL020 24NM
VHF Radio	Simrad RS20 VHF DSC
AIS	Simrad V5035 Class A
Compass	Magnetic Compass
Other Equip	CCTV, PA System

Fire fighting	
Fire Fighting	According to Class and Flag Rules
Life Saving	According to Class and Flag Rules
Fire Alarm, Smoke	Fire and Smoke Alarm System

Tank capacities	
Fuel Oil	3000 Liters
Fresh Water	1000 Liters
Sewage tank	150 Liter

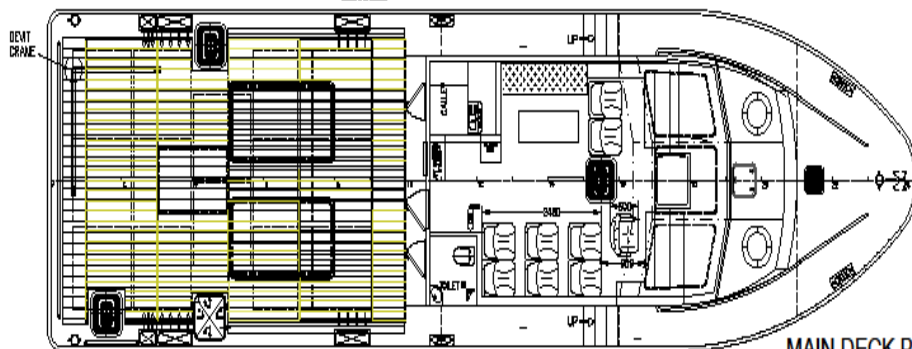
Hull and Superstructure	
Welded Aluminium Tampered/Toughened Glass	Kapur Timber Deck
Aluminium Bow Rail	Aluminium Side Rail
Fully Welded Strong Aluminium Engine Bed	Helmsman Chair & Commander Chair c/w Base
Accommodation for 3 bunks, with toilet	Non-Slip Deck



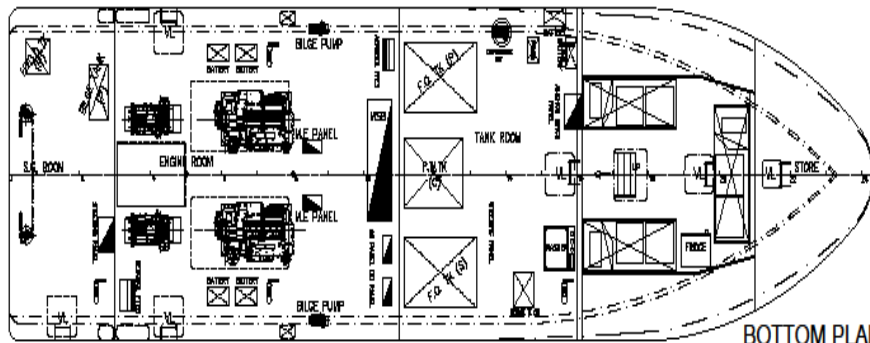
PROFILE

MAIN DIMENSIONS

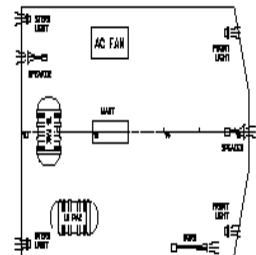
LENGTH O.A. (MLD HULL)	18.000 M
LENGTH WATERLINE	17.010 M
BREADTH MLD.	4.800 M
DEPTH MLD.	2.100 M
DRAFT (DESIGN)	0.850 M
SPEED	~18 KNOTS
CAPACITY	
- CREW	3
- PERSONNEL	12
- FUEL OIL	3000 L
- FRESH WATER	1500 L
- DECK AREA	30.0 M²
- DECK LOAD	0.75 T/M²
ENGINE	2xYANMAR 6CXBM-GT 400 HP @2500 RPM
GEAR BOX	YX-80 RATIO 2.887:1
GENERATOR	2 x CUMMIN ONAN 22.5KW
CLASS	BV I HULL • MACH
NOTATION	LIGHTSHIP-/FAST UTILITY BOAT
PORT OF REGISTRY	DOHA, QATAR



MAIN DECK PLAN



BOTTOM PLAN



MONKEY ISLAND

F	OWNER REQUEST	1/8/2023	VICTOR	Client :	SORA MARINE SERVICES W.LL
E	OWNER REQUEST	27/1/2023	TH	Builder:	LITA OCEAN PTE LTD
D	VOLUME OF FW TANK CHANGED TO 1000L. REQUIRED BY CLIENT.	22/12/2022	CS	Ship Name:	
C	UPDATED BASED ON NEW MAIN ENGINE LAYOUT.	22/04/2022	CS	Hull No.:	H213
B	UPDATED ACCORDING TO CLIENT'S REQUIREMENTS.	13/08/2022	CS	Class ID:	BV 43361J
Rev.	Detail of Modifications	Date	Done by	Project : 18.0 ALUMINUM FAST UTILITY BOAT	

JENJOSH MARINE DESIGN PTE LTD
 NO.7039 Northstar@MK, #03-14, Ang Mo Kio Ave 5
 SINGAPORE 569880
 Tel: (65)8848 4505 Fax: (65)8848 4818 E-Mail: info@jenjoshgroup.com

Title : GENERAL ARRANGEMENT			
Checked: SJ	Drawn : GS	Scale : 1 : 75	Date : 31/07/2023
Proj. No.: JJ1007	Dwg. No.: JJ1007-G02	Shk. No.: 1 OF 1	Rev. : D

File name: JJ1007-G02RevD GA

PAPER SIZE: A3